

INLET TYPE	L	W	1
G-1	2'-4-1/4"	1'-8-7/8"	
G-2	2'-4-1/4"	2'-3-3/8"	

TOP VIEW

N.T.S.

TYPICAL CATCH BASIN DETAIL

SPEC INDUSTRIES PRECAST RISER WITH FRAME AND GRATE OR APPROVED EQUAL

FRAME CAST IN TOP SLAB OF BASIN (IF TOP SLAB IS CAST-IN-PLACE)

MATCH DEPRESSED PAVEMENT GRADE

DROP FRAME AND GRATE 1" FROM FINISH GRADE

GROUT AS REQUIRED TO MATCH FINISH GRADE, (TYP.)

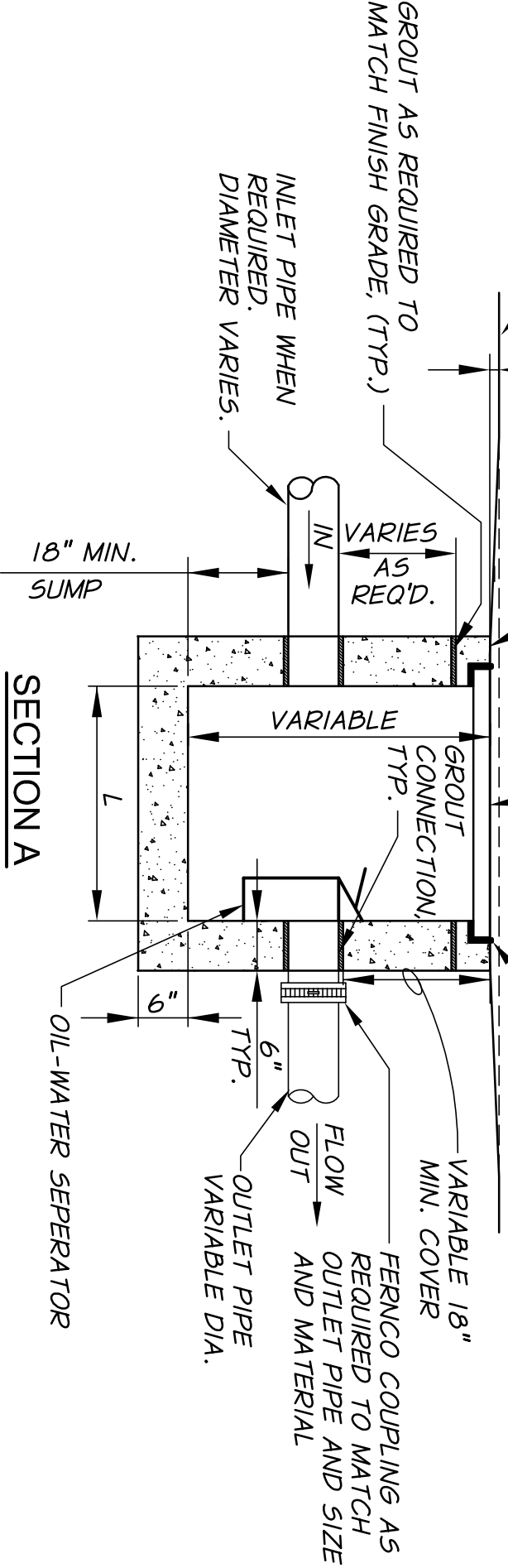
INLET PIPE WHEN REQUIRED. DIAMETER VARIES.

VARIABLE 18" MIN. COVER

FERNOCO COUPLING AS REQUIRED TO MATCH OUTLET PIPE AND SIZE

OIL-WATER SEPERATOR

SECTION A



- NOTES:**
1. CATCH BASIN TO BE CONSTRUCTED IN ACCORDANCE WITH ASTM C-139 AND C-913 (PRE-CAST).
 2. CONCRETE STRENGTH SHALL BE 3000 PSI.
 3. 6" OF 3/4" COMPACTED BASE MATERIAL TO BE PLACED AROUND STRUCTURE.
 4. REINFORCEMENT IN PRE-CAST CATCH BASIN TO BE REBAR MEETING ASTM A615 GRADE 60 OR WELDED WIRE MEETING ASTM A497.
 5. PRE-CAST CATCH BASINS SHALL BE PER OREGON STANDARD SPECIFICATIONS FOR CONSTRUCTION, TYPE G-1 OR G-2, AS APPROVED BY THE CITY.
 6. FRAMES AND GRATES PER OREGON STANDARD SPECIFICATIONS FOR CONSTRUCTION, AS APPROVED BY THE CITY.
 7. FIELD SET CATCH BASIN TO OBTAIN PROPER GRATE SLOPE TO MATCH FINISH GRADE.
 8. "FLOW THROUGH CATCH BASINS" SHALL NOT HAVE OIL-WATER SEPERATOR BUT SHALL RETAIN ALL OTHER PROVISIONS OF THIS DETAIL.
 9. REINFORCEMENT SHALL NOT BE REQUIRED FOR CAST-IN-PLACE CATCH BASINS.

REVISION	DATE
GENERAL UPDATES	12/06

CITY OF UNION OREGON

STANDARD STREET DETAILS
TYPICAL CATCH BASIN DETAIL

FIGURE
R10